

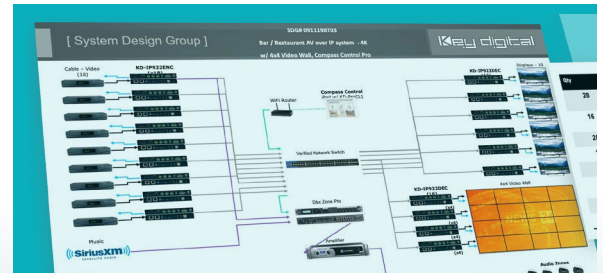
QUICK GUIDE TO DIY AV OVER IP SYSTEMS

KEY DIGITAL DIY AV OVER IP SYSTEM BUILDER

PHASE 1: PLANNING & PREPARATION

1. Determine System Size

- › One [KD-IP922ENC-II](#) Encoder per video source.
- › One [KD-IP922DEC-II](#) Decoder per video display.



2. Purchase Your Key Digital Equipment

- › Many of our distributors stock KD 4K AV over IP equipment to fulfill the equipment for new installs, or to easily add sources and displays. For a clean install, mount up to 12 units in [KD-SMS16](#).



3. Plan your IP Addresses

- › Each Key Digital unit requires 2 IP addresses.
- › The Main IP address handles all inter-device communication.
- › The Video IP address handles the transmission and reception of the video broadcast.



4. Select a Compatible Network Switch

- › View our [Verified Network Switches Guide](#) for list and setup instructions covering a wide variety of popular partner brands.
- › PoE network switch is recommended since power supplies are not included, but may be purchased separately.
- › If stacking network switches, 10G fiber links are needed according to bandwidth calculations.
- › Contact tech@keydigital.com for any questions!



Scan for
[Verified Network
Switches Guide](#)



NEXT STEP – PHASE 2: CONFIGURATION & CONTROL >>>

ORDER YOUR KEY DIGITAL AVoIP SYSTEM TODAY AND START BUILDING!

Key digital[®]
Engineered for Your Success[™]

Contact the Sales Team for Where to Buy:

- › Email: sales@keydigital.com
- › Phone: 914.667.9700 ext 2

QUICK GUIDE TO DIY AV OVER IP SYSTEMS

KEY DIGITAL DIY AV OVER IP SYSTEM BUILDER

PHASE 2: CONFIGURATION & CONTROL

1. Configure Network Switch

- › Follow the instructions in our short and easy [step-by-step guide](#) to correctly configure your network switch.



Scan QR for [Verified Network Switches Guide](#)



2. Watch the System Builder Video

- › The [tutorial video](#) detailing the system configuration process is less than 10 minutes long!



Scan QR for [System Builder Tutorial Video](#)



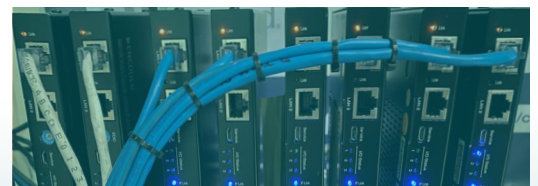
3. Configure Encoders and Decoders in **KDMS™ Pro**

- › Follow instructions from step 2 above. You will need a PoE network switch or injector, and the USB cable included with each Enc/Dec.



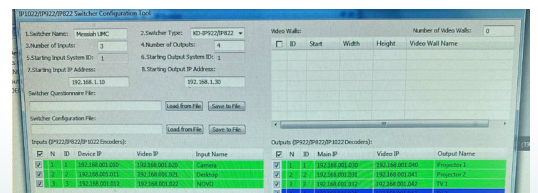
4. Install Encoders and Decoders

- › If you've already configured the system as instructed above, connect units to network with a CAT6 cable.
- › Connect HDMI, and IR or RS-232 cables according to control plans.



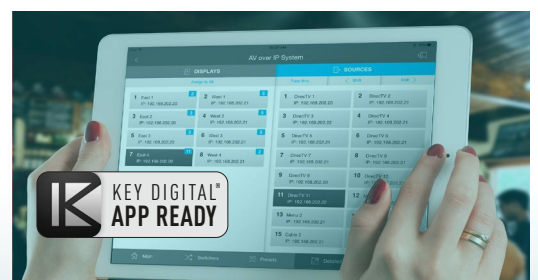
5. Confirm System with **KDMS™ Pro**

- › Perform a network scan and confirm all units are present and healthy (as indicated by black text color).
- › You may now use KDMS' control UI to route video.



6. System Control

- › Control from KDMS™ Pro, [Key Digital® iOS App](#), [Key Digital® Compass Control® Pro](#) or 3rd party control system.
- › Download 3rd party drivers from [KD-IP922ENC-II](#) / [KD-IP922DEC-II](#) product pages or refer to our [Open API & Video Wall Management](#) documents for additional resources.



ORDER YOUR KEY DIGITAL AVoIP SYSTEM TODAY AND START BUILDING!

Key digital®
Engineered for Your Success™

Contact the Sales Team for Where to Buy:

› Email: sales@keydigital.com

› Phone: 914.667.9700 ext 2