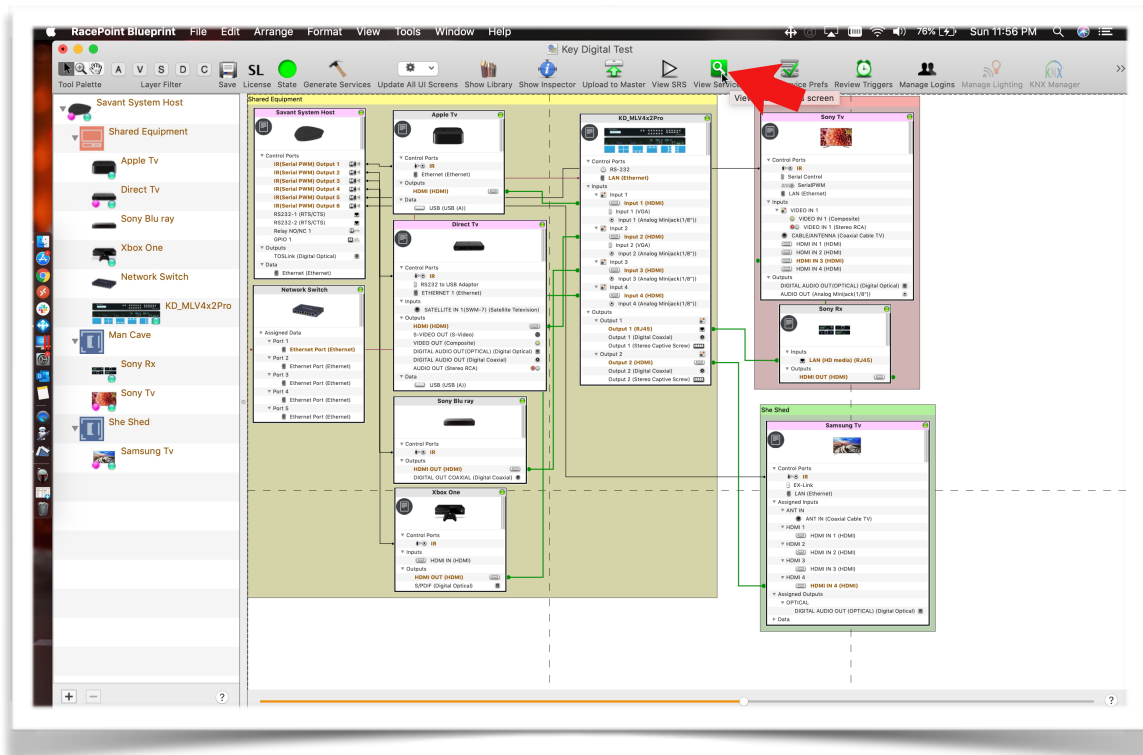
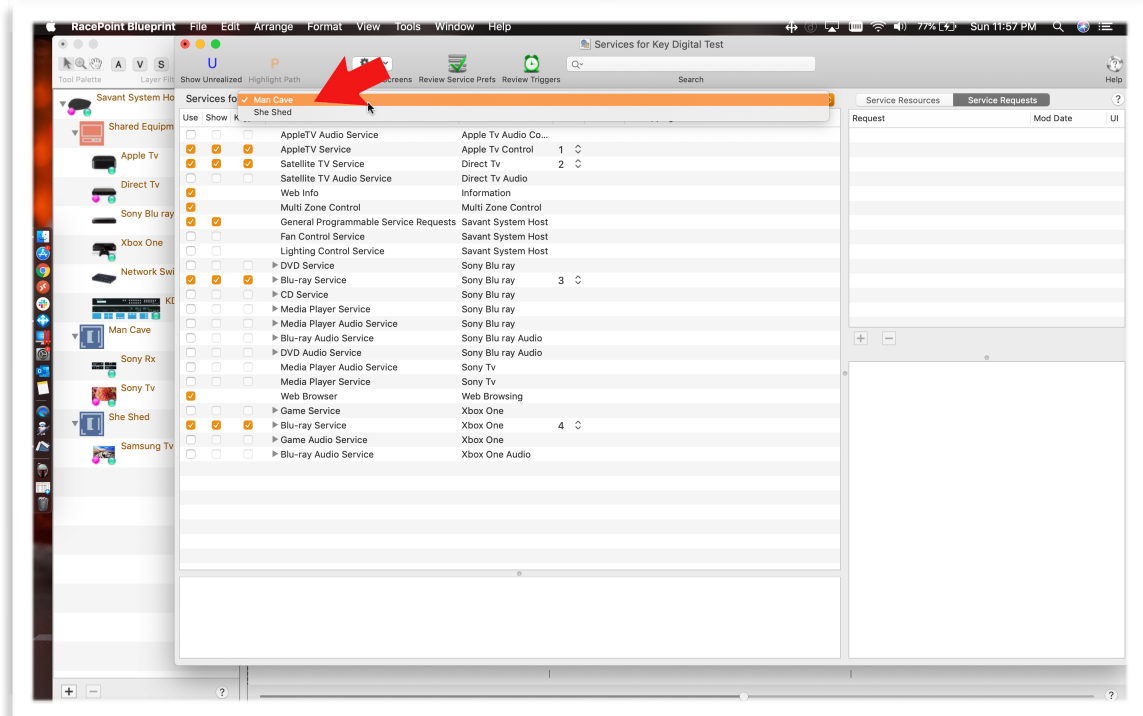


How To Setup KD-MLV4x2Pro With Savant

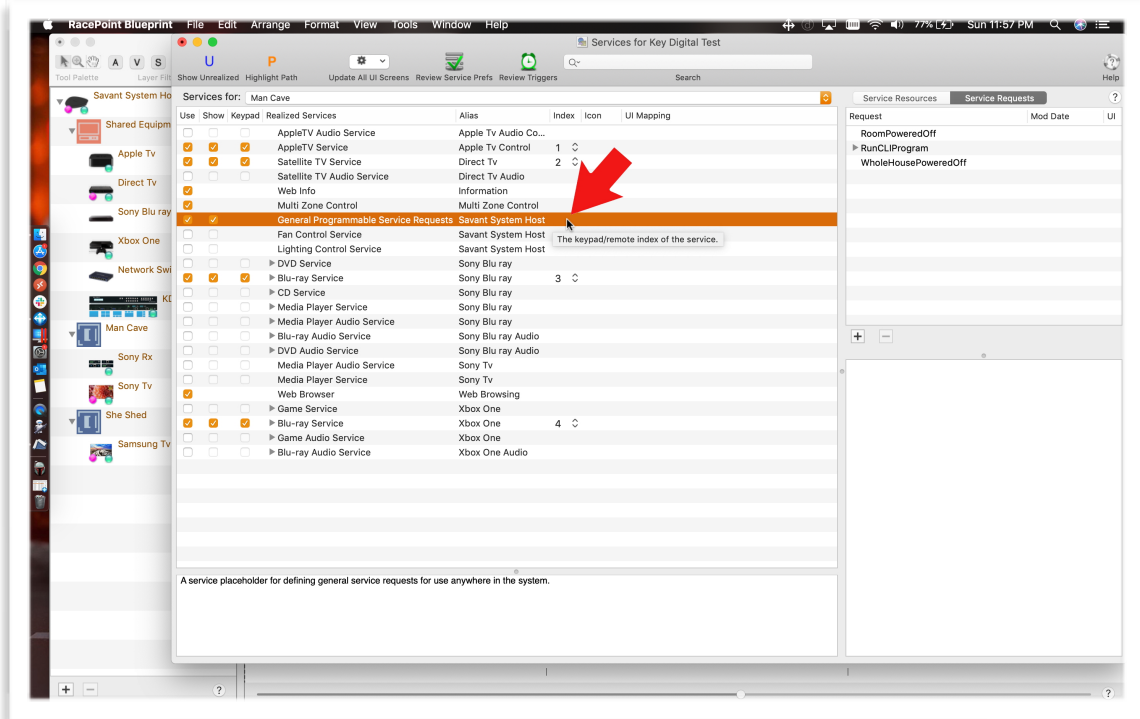


1. Click on View Services

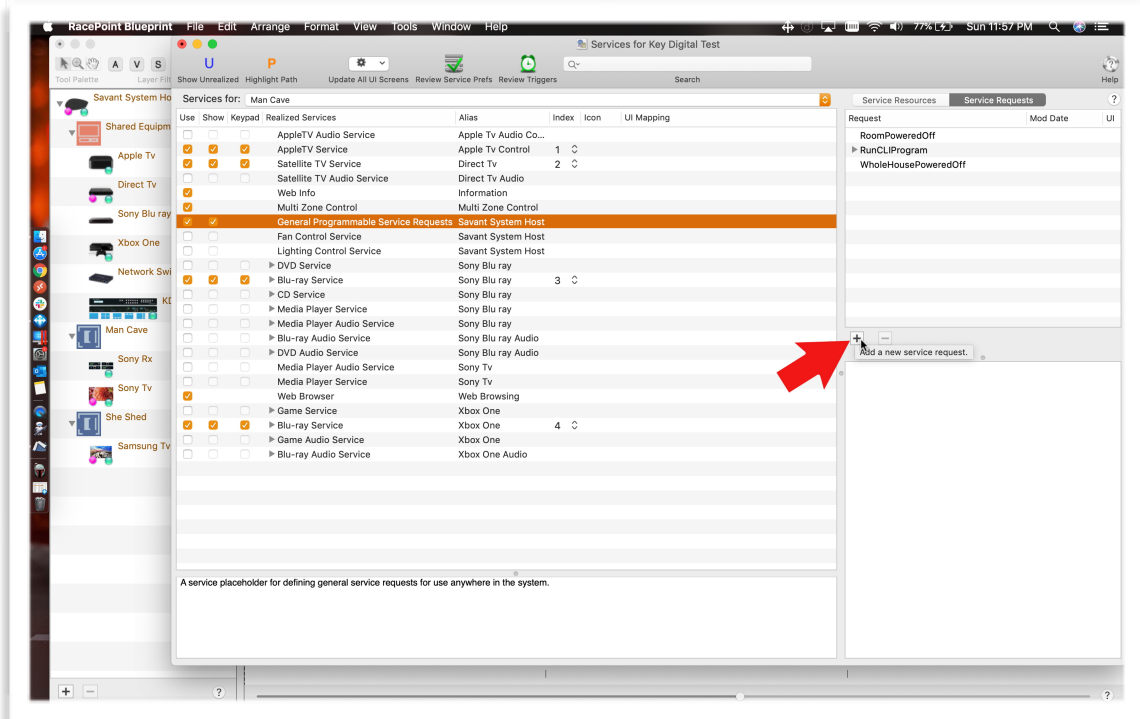


2. Select the Room you would like to create custom commands for.

How To Setup KD-MLV4x2Pro With Savant

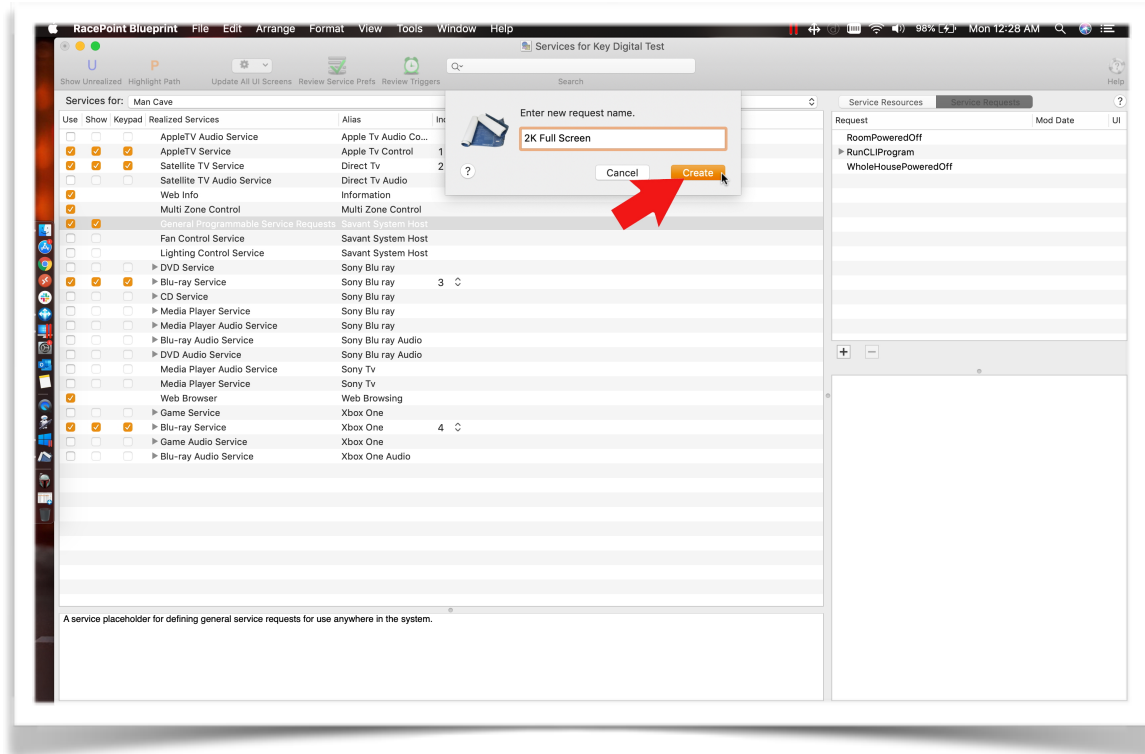


3. Click on General Programmable Services Request.

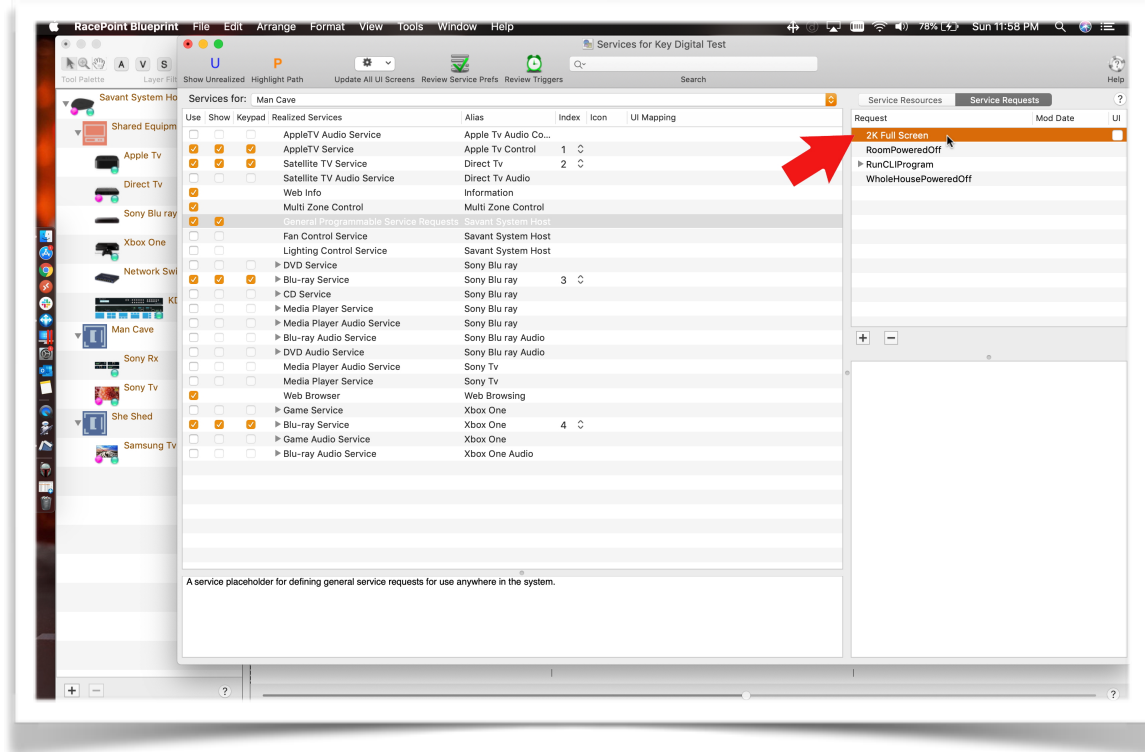


4. Click on the + to add a New Custom Service Request.

How To Setup KD-MLV4x2Pro With Savant

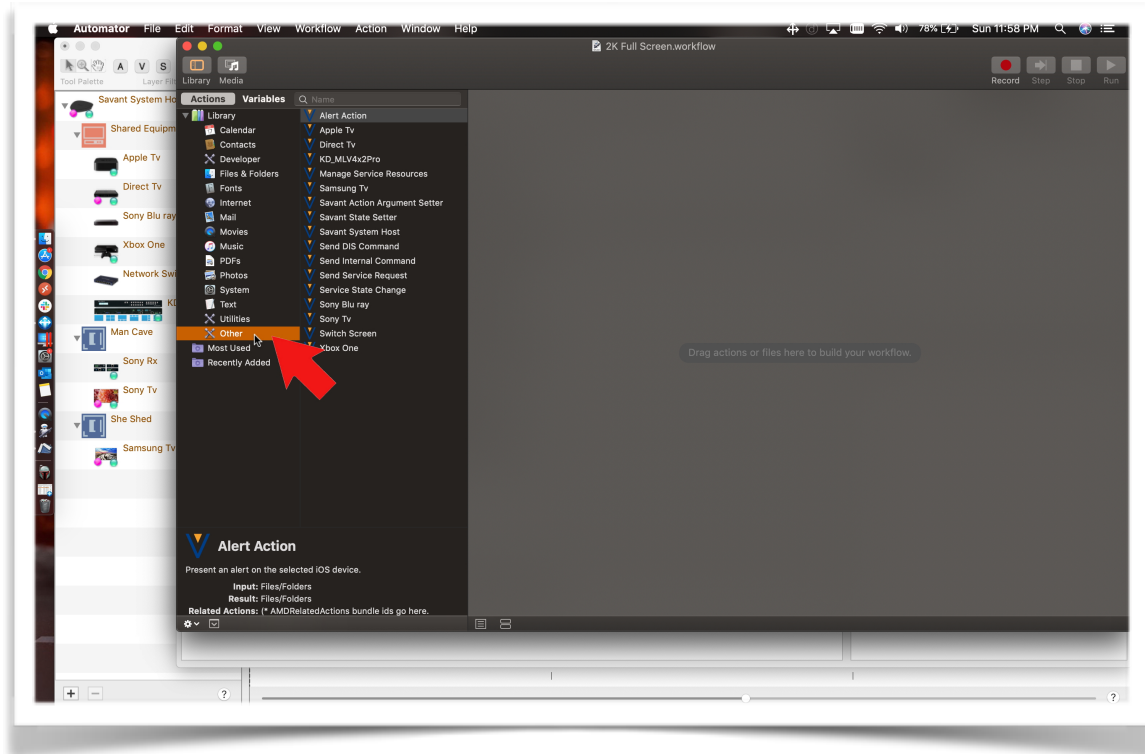


5. Give your service a name and click on Create.

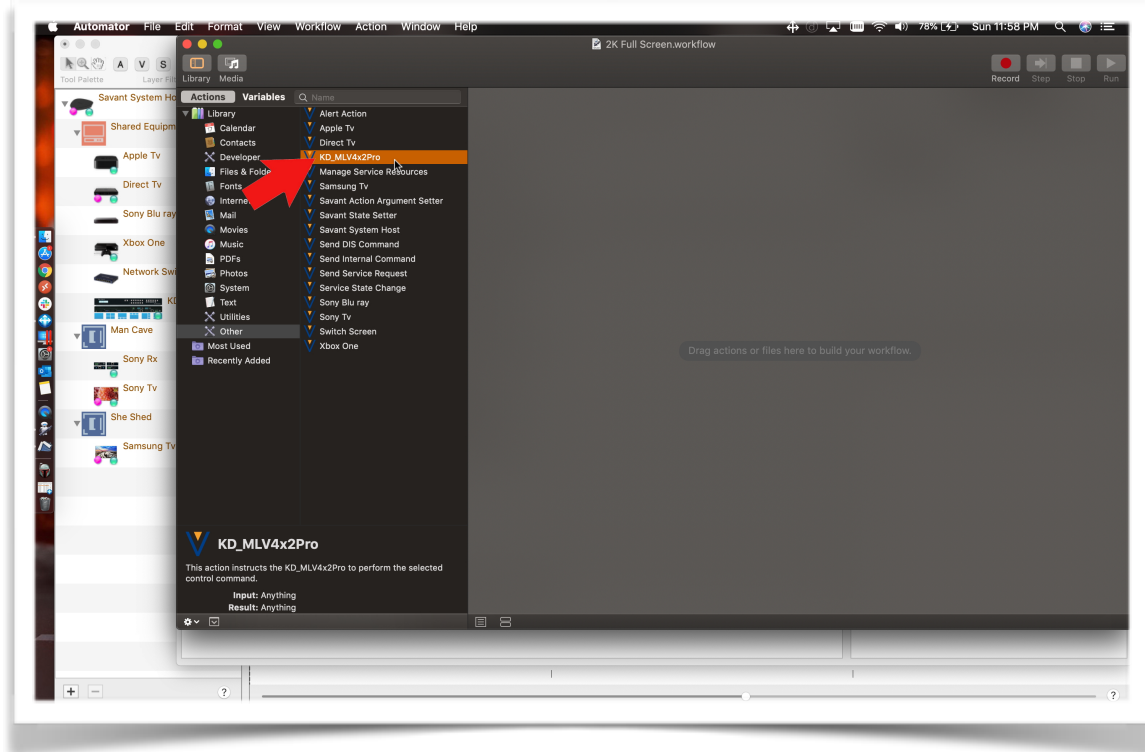


6. Double click on the service you just created to open up automator.

How To Setup KD-MLV4x2Pro With Savant

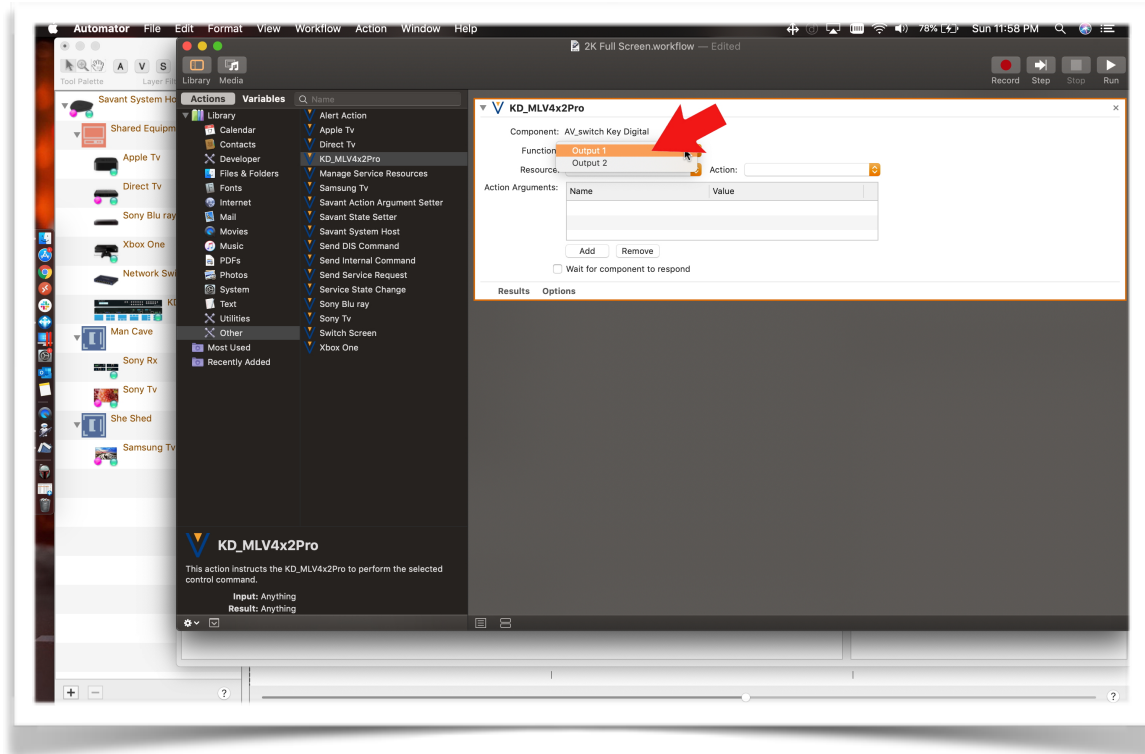


7. Click on Other to bring up a list of your devices.

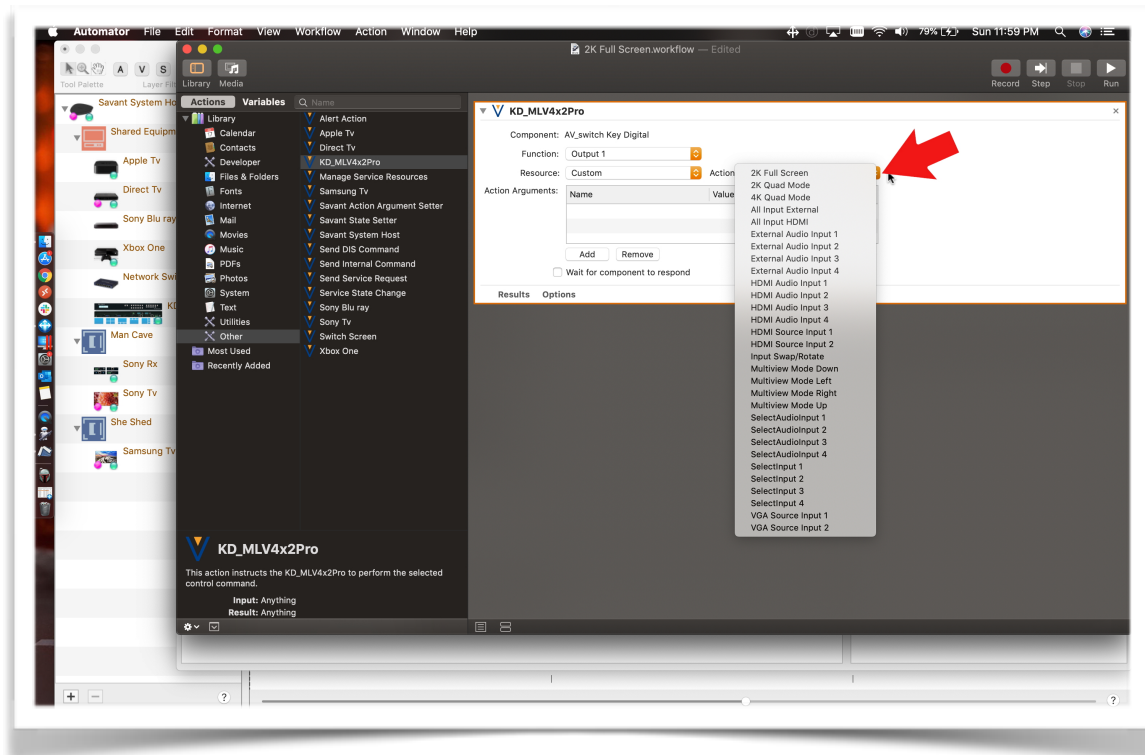


8. Double Click on the KD-MLV4x2Pro to add an Action to your Workflow.

How To Setup KD-MLV4x2Pro With Savant

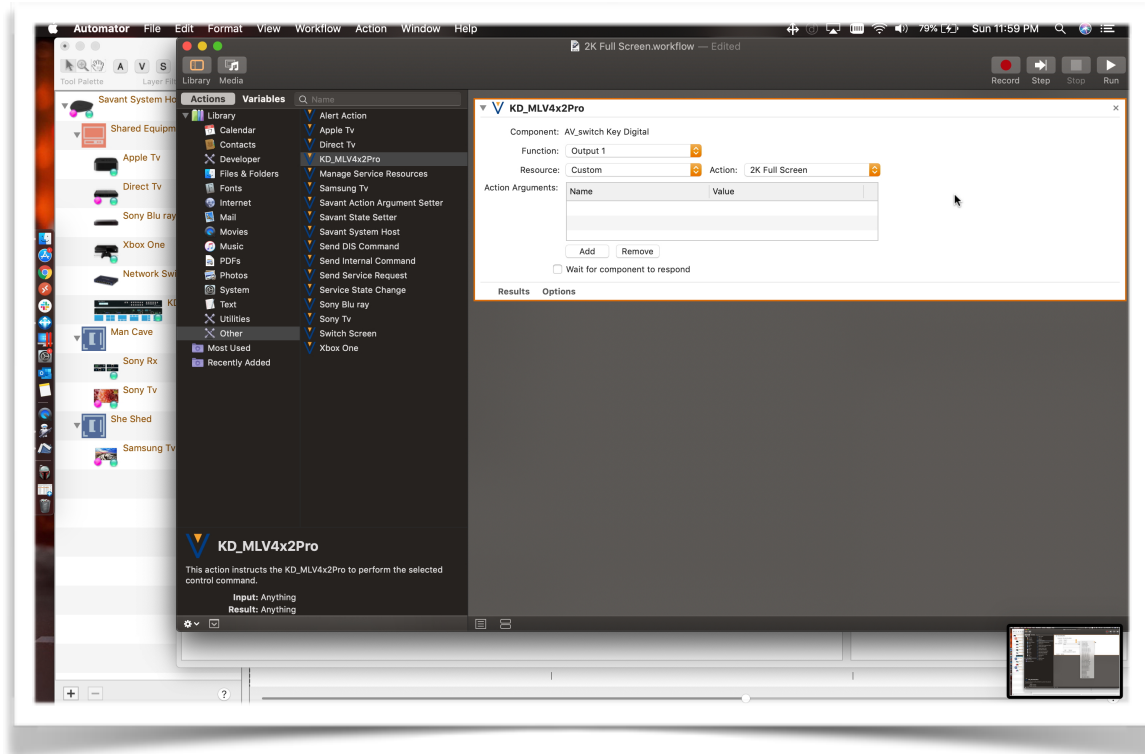


9. Click on the down arrow next to function to select the output you want to control, Then select Custom under Resources.

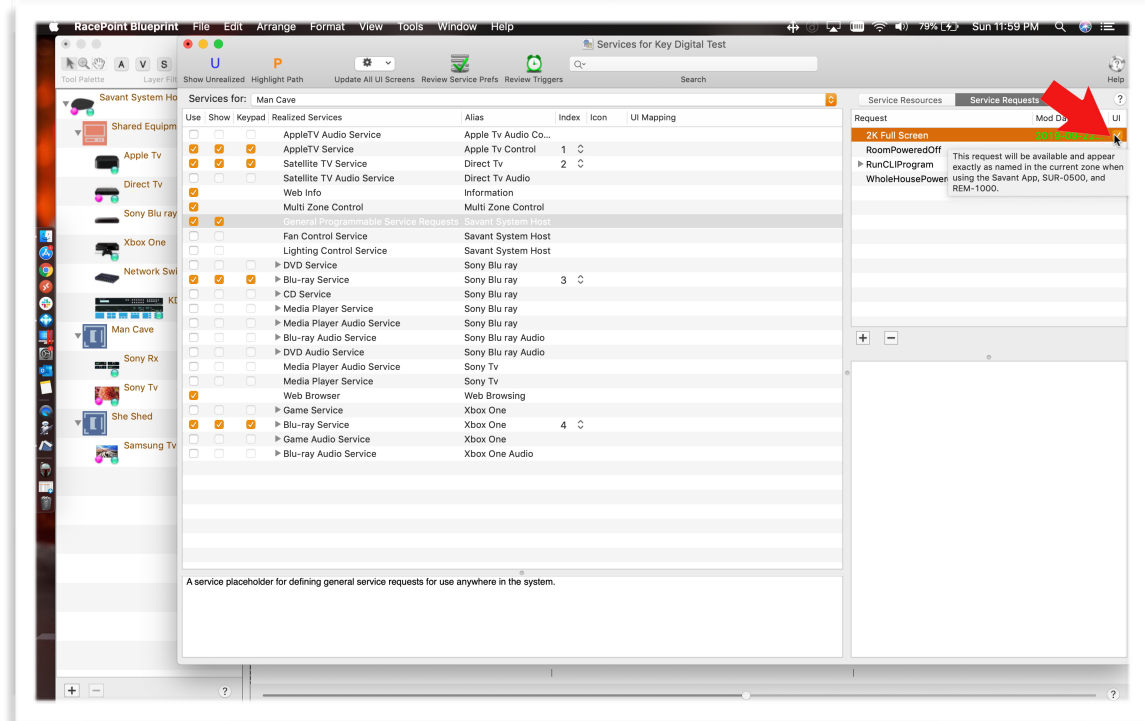


10. Click on Actions Down Arrow to reveal full list of custom commands, Select Command

How To Setup KD-MLV4x2Pro With Savant

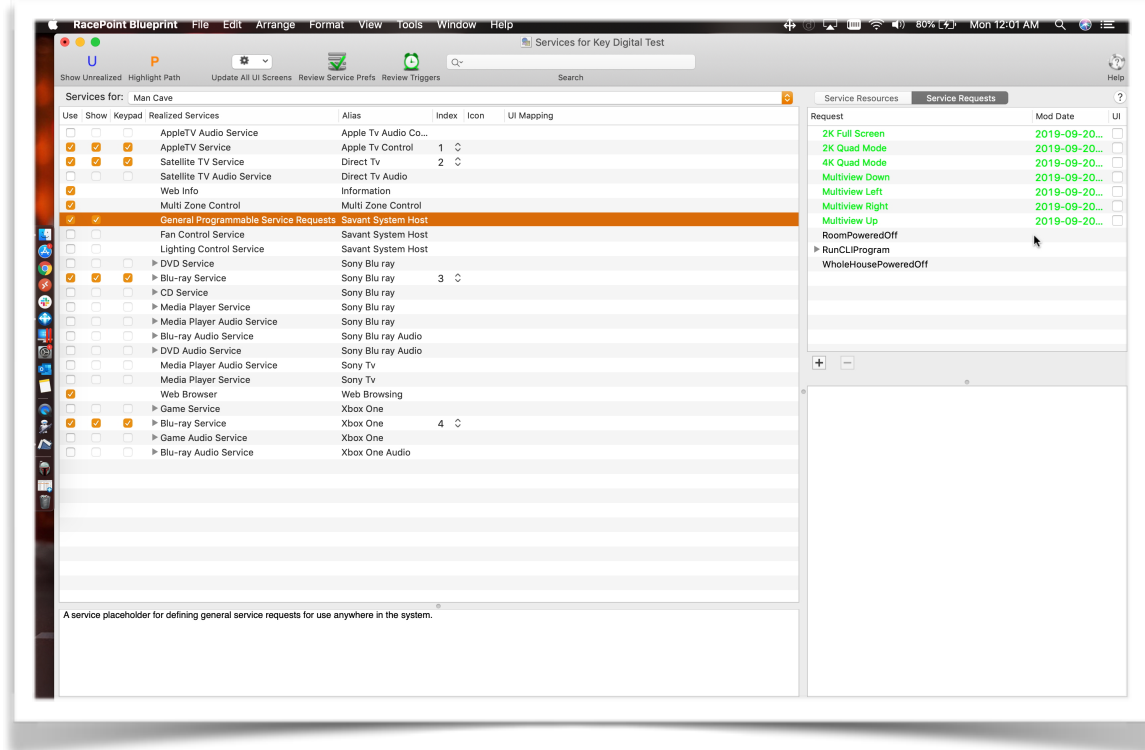


11. Click on File, then save to save changes to workflow.

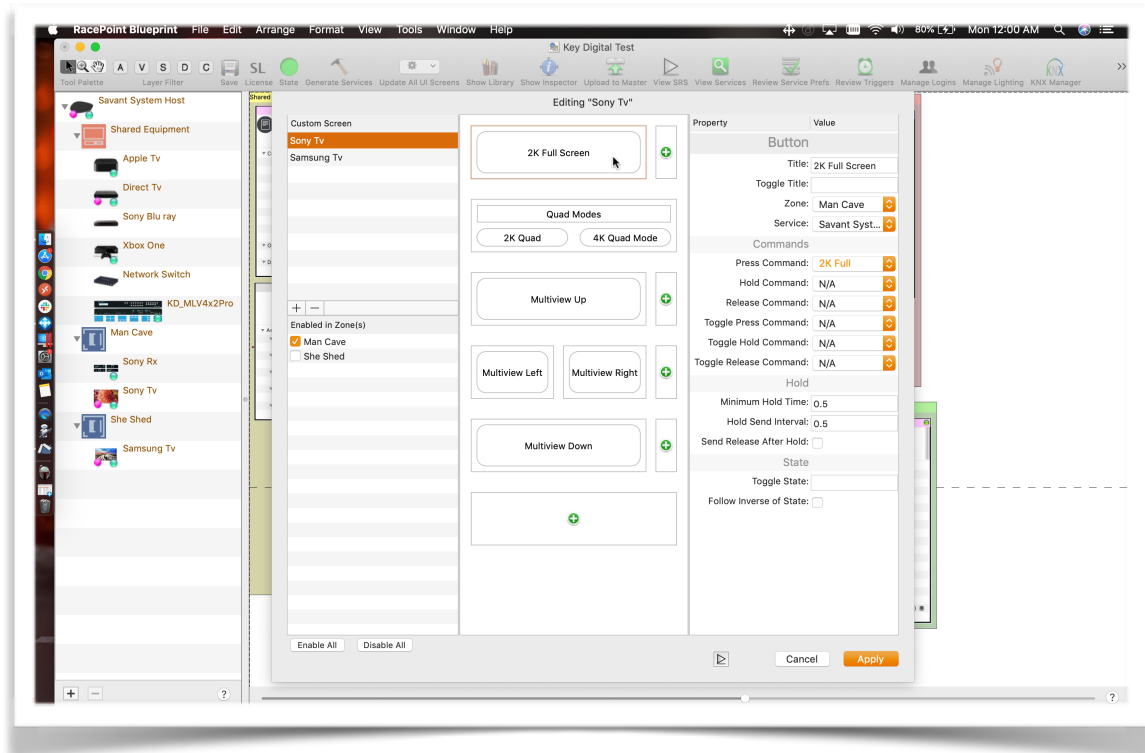


12. Click on the UI Check Box if your client would like the custom command to come up on the Remote REM-1000, REM-1100, REM-2000.

How To Setup KD-MLV4x2Pro With Savant

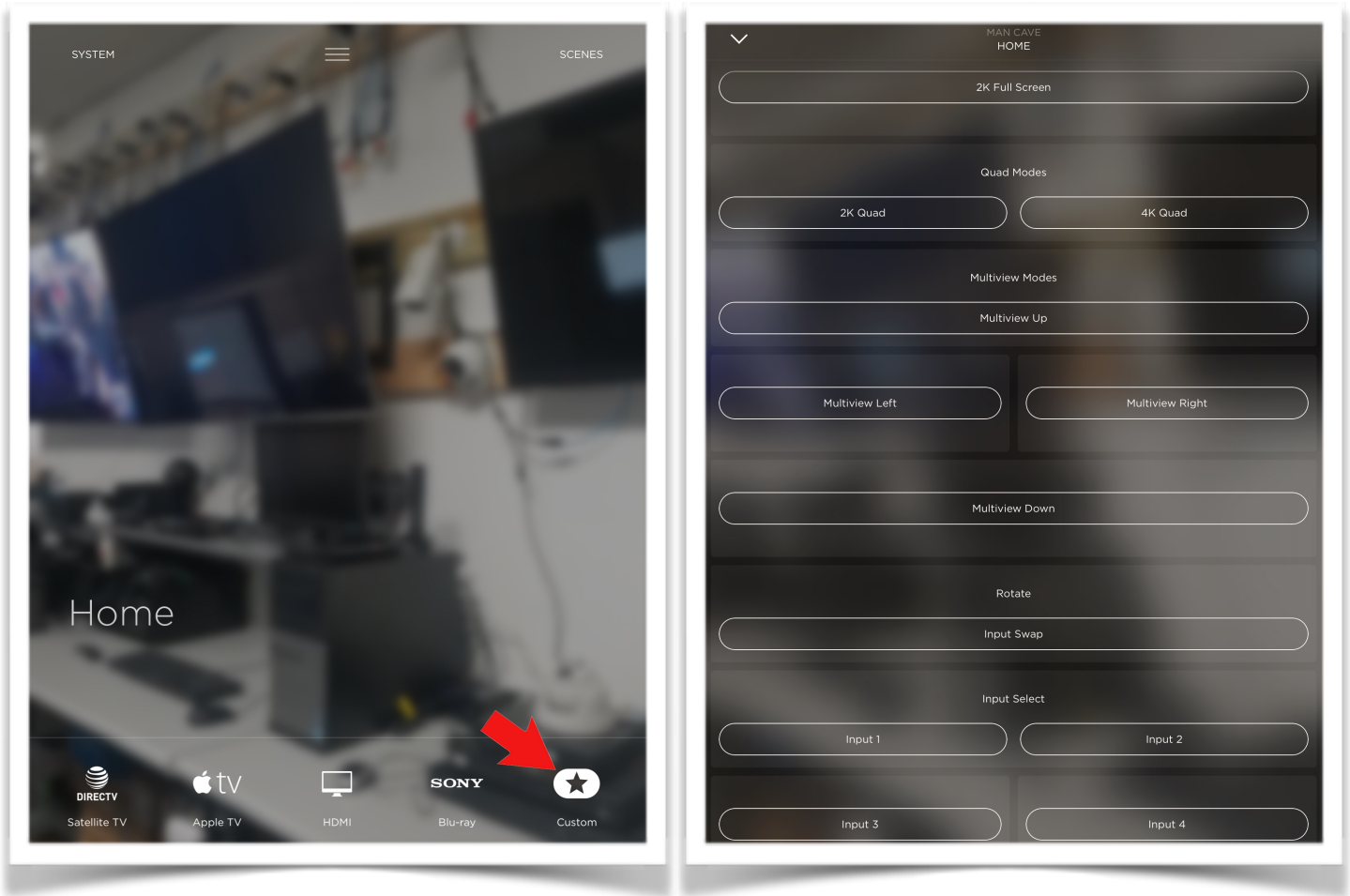


13. When its all said and done your screen should look some thing like this, you want to do this for all the room.



14. You can also create Custom App page that will only be visible on the Savant Pro 8 App.

How To Setup KD-MLV4x2Pro With Savant



15. This is what it looks like on the Savant Pro 8 App if you get creative with the Custom App page.