



Key Digital 4K AVoIP Image Preview Manual

About:

The 4K AVoIP Image Preview modules generate a preview thumbnail image in your Compass Control Pro UI from each encoder in your Key Digital 4K AV over IP system. The module works with models KD-IP822ENC, KD-IP922ENC, KD-IP922ENC-II, KD-IP1022ENC, and KD-IP1022ENC-II encoder models.

Notes:

- iOS allows for only a single preview to load at a time.
- The preview load time can be adjusted in these instructions, but usually a single image load takes 30 seconds or more depending on network and image size (video resolution), and includes the preview request command, image preparation, and image loading.
- The preview is an image, not a video.

Add Modules:

In Compass Navigator v2.0.8 and later, go to PROGRAM > ADD MODULES ([see image 1 below](#)).

There are two module types available to be added:

- KD-AVoIP-Preview
 - This module must be added to your project to use the 4K AVoIP Image Preview feature because it includes the driver that generates the Image Previews
 - Once added, this module adds a page called AVoIP_Preview_List. The module page is an auto-populating list of preview windows for each of your encoders. [See image 2 below](#).
 - You may also add Image Preview windows to your own custom pages by following the instructions in this guide.
- KD-XxX_AVoIP_Preview
 - This module features a matrix routing control page, with the Image Preview windows next to each source button. [See image 3 below](#).
 - Choose the module which most matches your system size without going under. For example, if you have a 6x30 system, add the KD-32x32_AVoIP_Preview.

Setup Control:

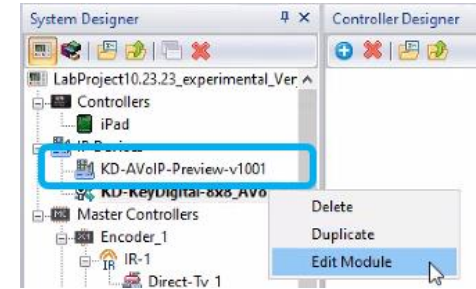
Go to PROGRAM > CONTROLLING FLOW. Drag the modules into the IP DEVICES section of the SYSTEM DESIGNER WINDOW. [See image 4 below](#).

Select each module and in the PROPERTIES window at the right-side of screen, enter a unique address for each into the L-IP cell, using IP Port 23. We recommend using the Main IP address of Decoder #1 for the KD-AVoIP-Preview module and the Main IP address of Encoder #2 for the KD-XxX_AVoIP_Preview module. However, you can use the Main IP address from any Encoder or Decoder in your AVoIP system.

KD-AVoIP-Preview Module Setup

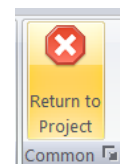
In the SYSTEM DESIGNER window, at left-side of screen, right-click the KD-AVoIP-Preview and choose EDIT MODULE to enter the Compass Navigator's Module Editor mode.

At the bottom of the CONTROLLER DESIGNER window, choose the VARIABLES tab and find the following 4 variables:



- Programmer_Preview_Total
 - Select the variable, and enter the amount of Encoders in your KD 4K AVoIP system into the INITIAL VALUE (SAME) cell in the PROPERTIES window at the far-right side of the screen. [See image 5 below.](#)
 - For example, if you have a 12x25 system, enter 12.
 - Note that the minimum amount of encoders must be 2 or greater. If you wish to omit any encoders from the Image Preview feature, they must be final ID # assignments in your system. For example, in your 12x25 system if you wish to only have the Image Preview of 10 encoders, then the two encoders that you do not want to preview must be assigned ID #s 11 and 12 in KDMS Pro.
- Programmer_IP922_PreviewNames
 - Choose the variable, and press the “...” ellipses button in the PROPERTIES window at the far-right of screen. Enter a friendly name for each Encoder. For example, “Cable 1”, “Cable 2”, “Present”, “AppleTV”. Press OK. [See image 6 below.](#)
- Programmer_Preview_Enable (typically not edited)
 - The default INITIAL VALUE (SAME) for this variable is “true”, meaning that upon launching, the Compass App will begin generating the Image Previews.
 - You may set this to “false” if you wish and manually initiate the Image Preview generation by pressing the LIVE FEEDS button on the top-left of the AVoIP-Preview-List page
- Programmer_Preview_Time (typically not edited)
 - The default INITIAL VALUE (SAME) for this variable is 30, which is the amount of seconds between the collection of the Image Preview from encoder to encoder.
 - You may attempt lower times by editing the value in the INITIAL VALUE (SAME) cell. In systems with lower encoder counts, you can try lower values (times), but anything lower than 10 seconds is not recommended.

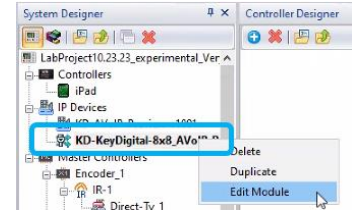
Choose FILE > RETURN TO PROJECT, and SAVE to return to your project with the updates saved.



KD-XxX_AVoIP-Preview Module Setup

In the SYSTEM DESIGNER window, at left-side of screen, right-click the KD-XxX_AVoIP-Preview device and choose EDIT MODULE to enter the Compass Navigator's Module Editor mode.


At the bottom of the CONTROLLER DESIGNER window, choose the VARIABLES tab and find the following 2 variables:



- Programmer_IP922_OutputNames. In the Properties window at the right-side of screen, press the "..." ellipses button. Enter the desired user-friendly name for each display / decoder. The row number must match with the encoder ID # assignments in KDMS Pro. Enter a space for any rows that will not be used. Press OK. [See image 7 below.](#)
- Programmer_IP922_InputNames variable. In the Properties window at the right-side of screen, press the "..." ellipses button. Enter the desired user-friendly name for each video source / encoder. Enter a space for any rows that will not be used. The row number must match with the encoder ID # assignments in KDMS Pro. Press OK. [See image 8 below.](#)

Choose FILE > RETURN TO PROJECT, and SAVE to return to your project with the updates saved.

Using Image Preview in Custom Projects

- Add or go to the custom page where you'd like the image preview(s) to be located.
- At the top of the PAGE DESIGNER window, press the  button, and choose IMAGE to add an image to the page.
- With the new image selected, in the PROPERTIES WINDOW, select PREVIEW, and enter the INPUT # corresponding to the System ID # of that encoder.
- The following common SET GUI ELEMENT PROPERTY actions may be applied to an Image Preview:
 1. The PREVIEW property may be set to a numerical of the Encoder you'd like the Image to be a preview of.
 2. Visibility can be set to 0 or 1 to make the image invisible or visible, respectively.
 3. Events & actions can be placed on the image press like a button
 4. An Image Preview may be placed within a group and list.
 5. Etc
- [See image 9 below](#)

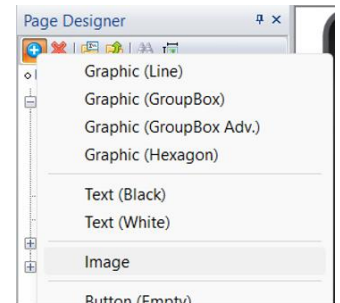


Image 1: Steps to add module(s) to project.

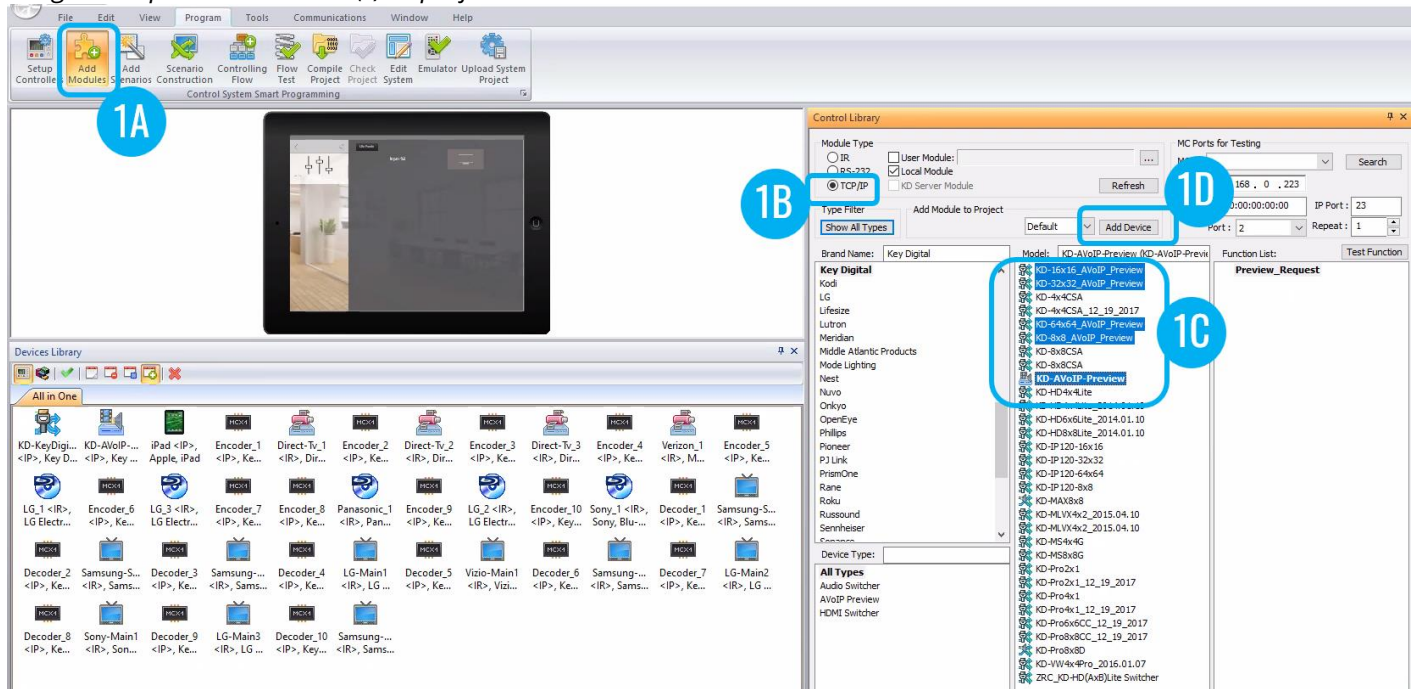


Image 2: The module page for the KD-AVoIP-Preview module

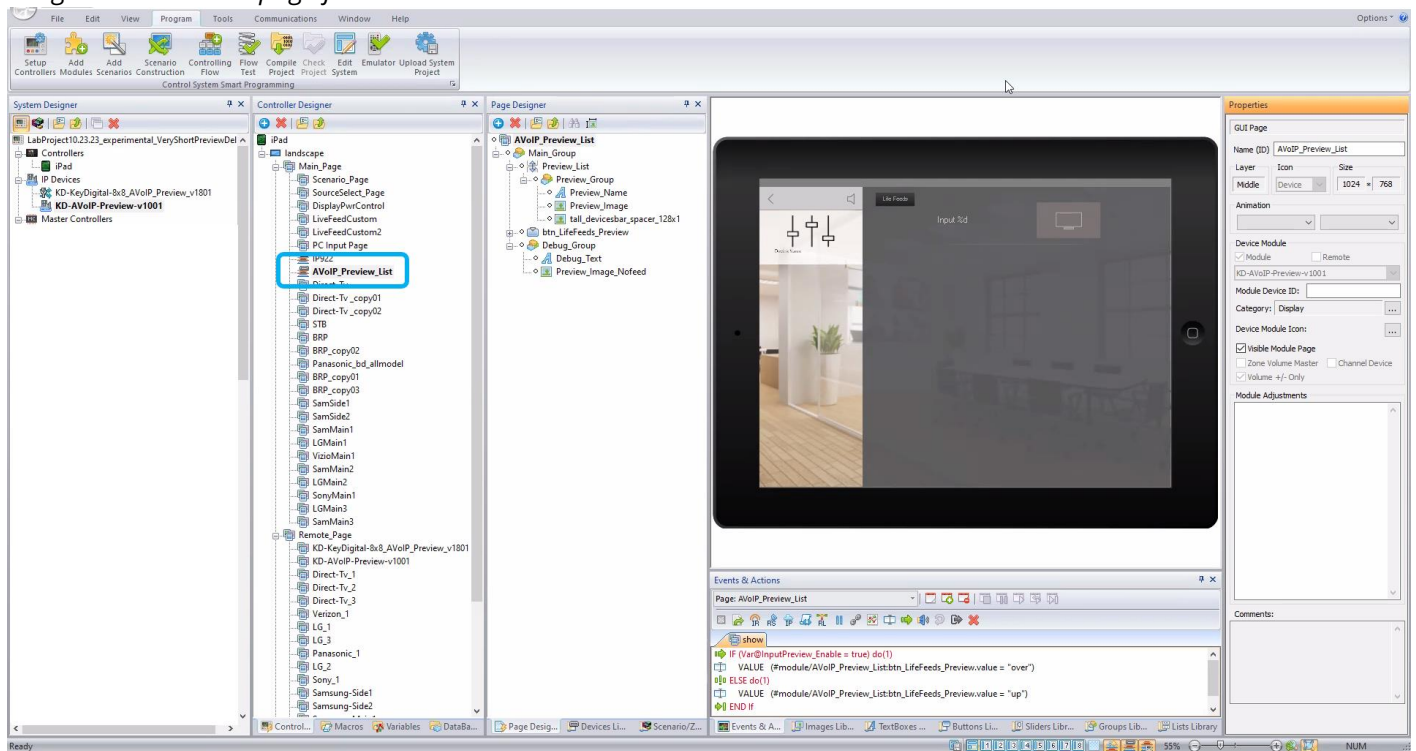


Image 3: The module page for the KD-XxX_AVoIP_Preview module

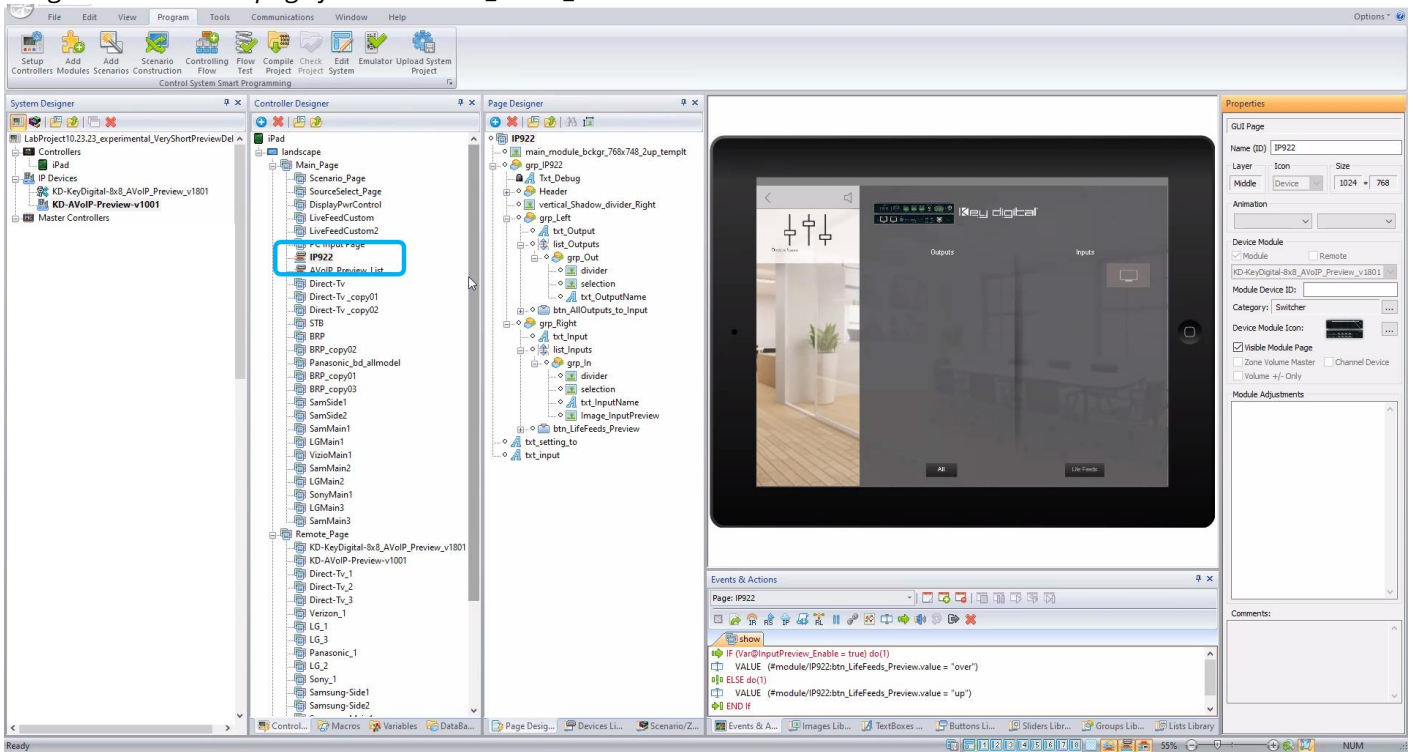


Image 4: Steps for Controlling Flow tree and entering IP address for each module

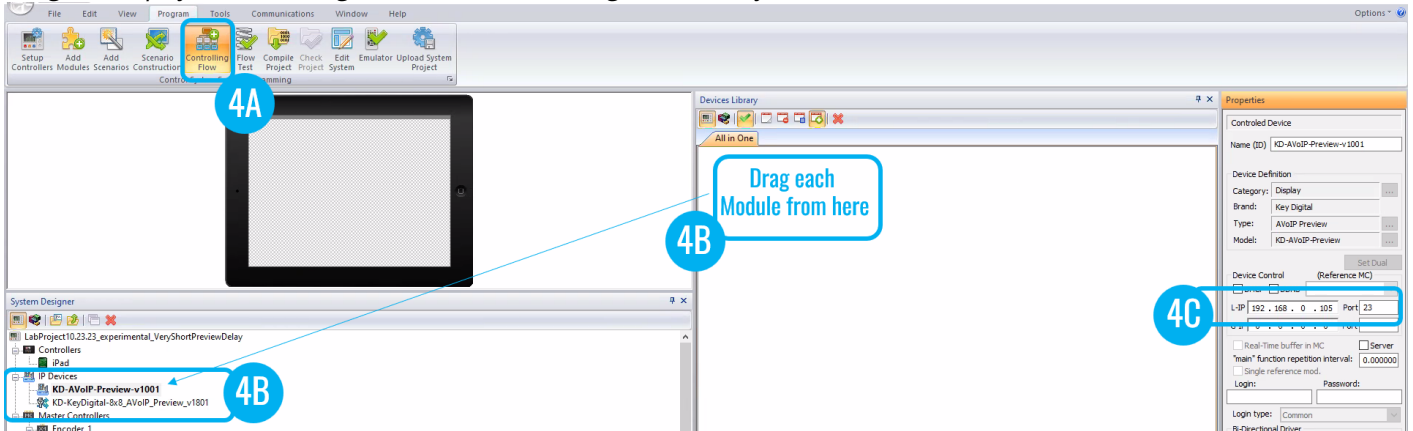


Image 5: Steps for editing Programmer_Preview_Total variable

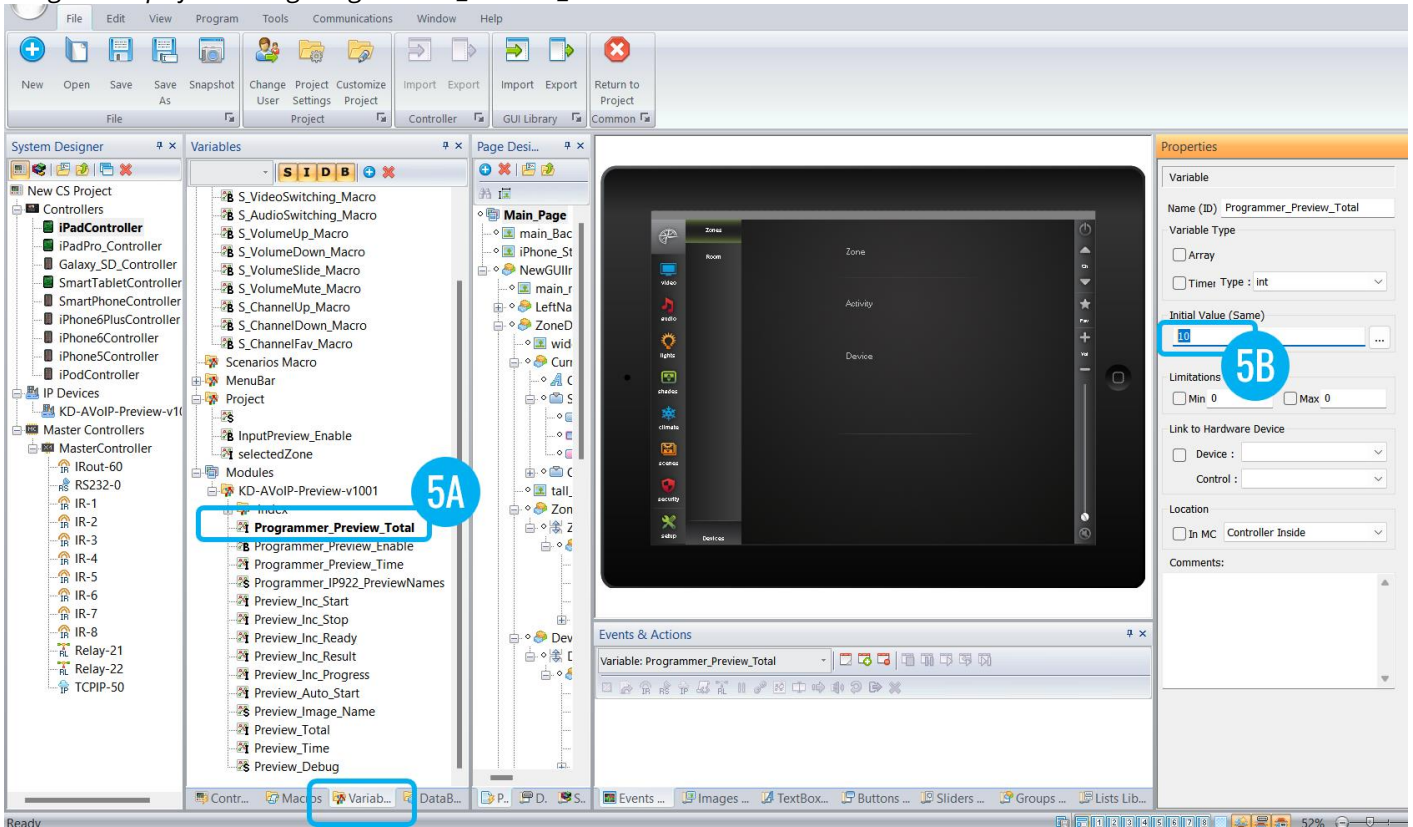


Image 6: Steps for editing Programmer_IP922_PreviewNames variable

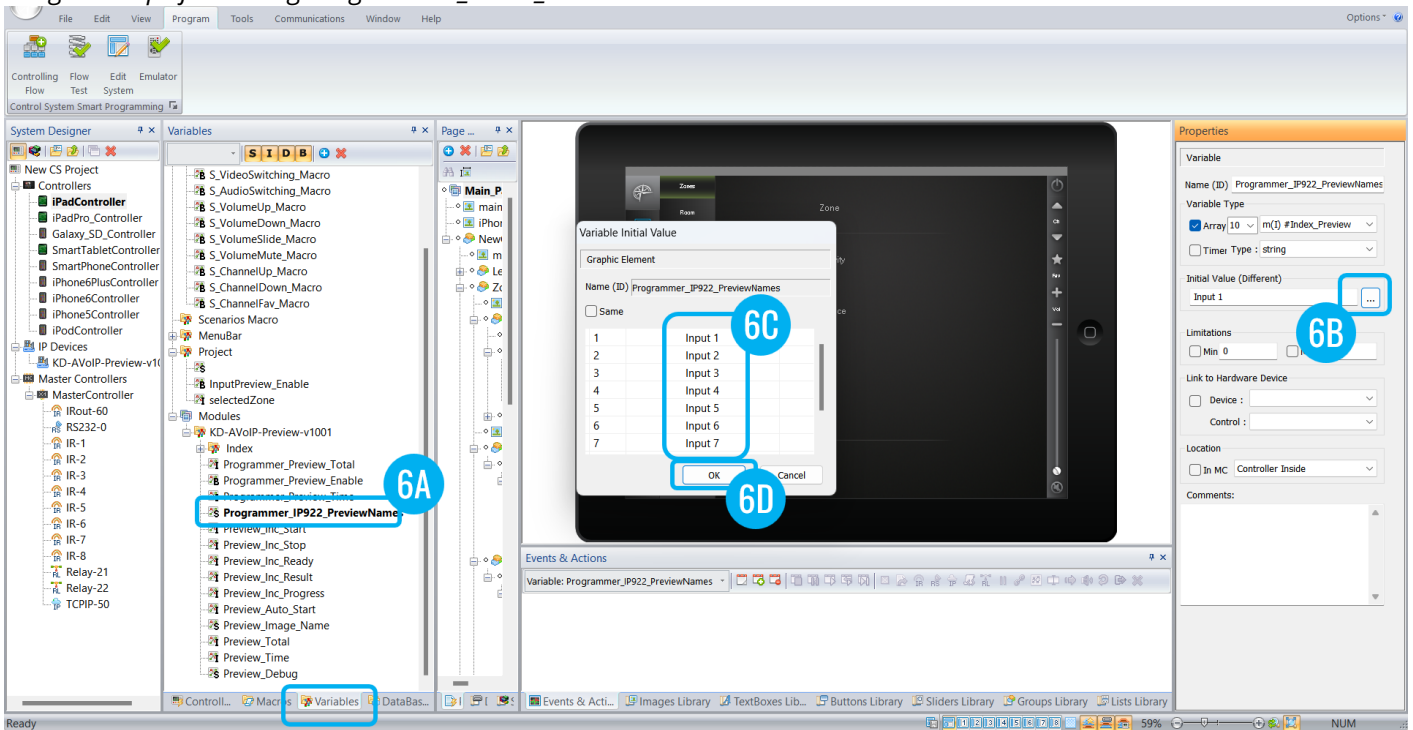


Image 7: Steps for editing Programmer_IP922_OutputNames variable

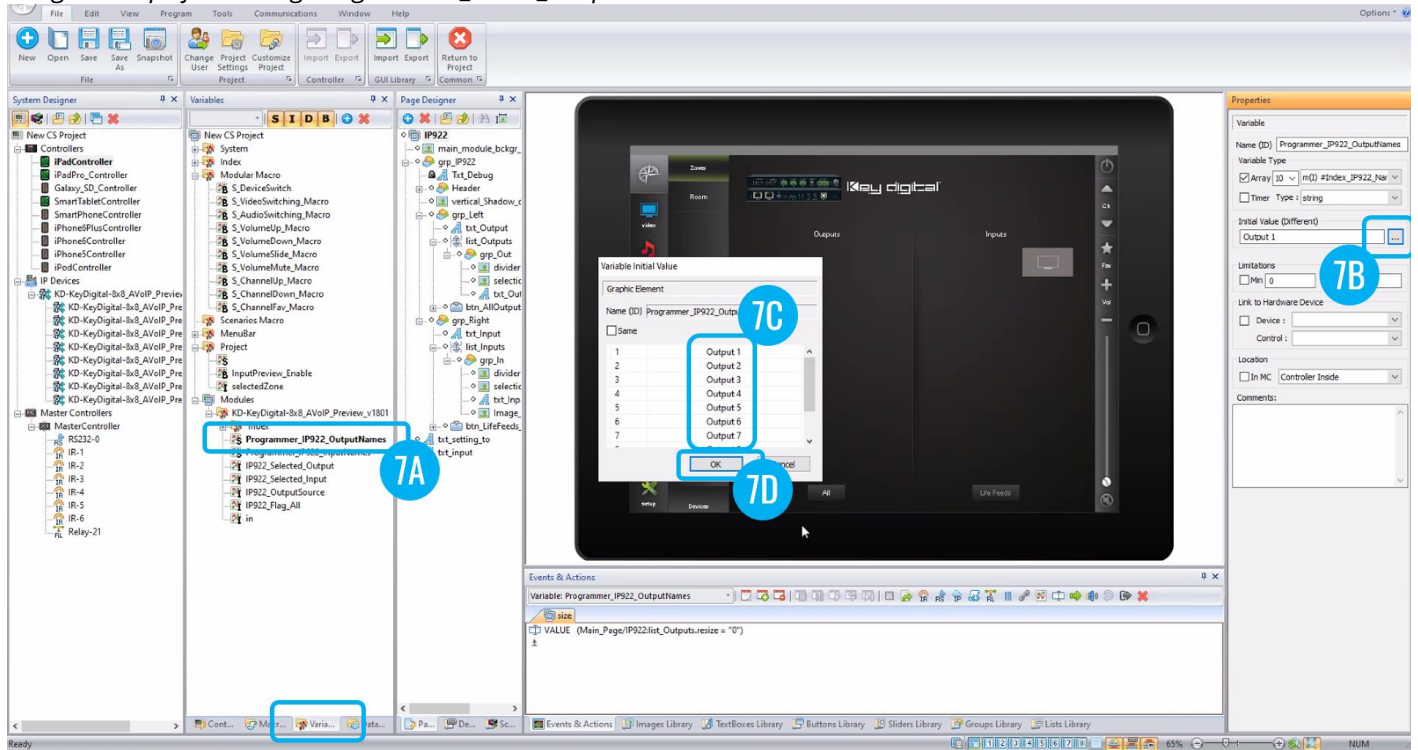


Image 8: Steps for editing Programmer_IP922_InputNames variable

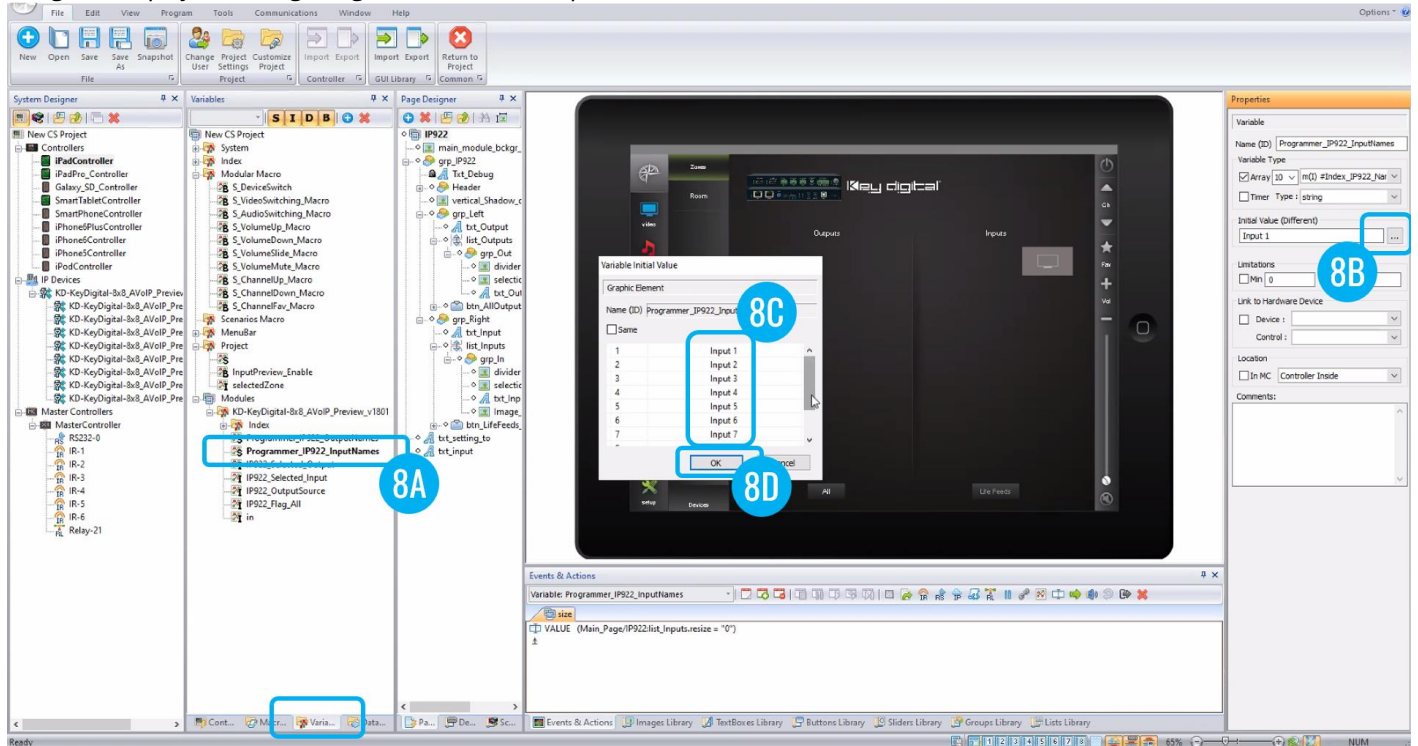


Image 9: Adding custom Preview Image and example GUI Events & Actions

